

The OKNA Insul-Tec is our most popular choice for window replacement. The Insul-Tec combines excellent craftsmanship with a traditional look and feel. This Series offers all the benefits you come to expect from vinyl windows with a variety of options to make your home energy efficient while enhancing its beauty. Since all OKNA products are custom-made, you can be sure of a perfect fit, which translates to savings on time and labor during installation



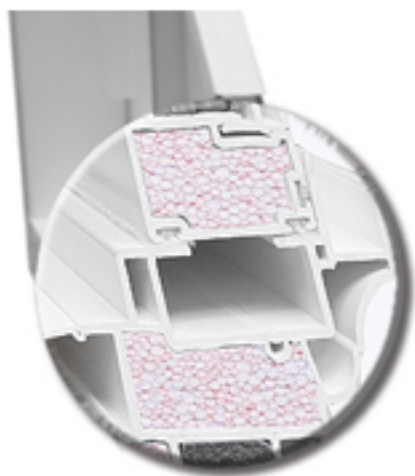
### **Insul-Tec - Double Hung**

- ▶ Full 3¼" Depth Welded Mainframe with beveled colonial exterior features curves that are not only beautiful, but also allow for maximum weld surface resulting in strength and years of long lasting performance.
- ▶ Heatseal® warm edge spacer system for excellent thermal efficiency and drastic reduction in the possibility of condensation on the inside of the window.
- ▶ Full integral interlock with double weather-stripping.
- ▶ The optional Auto-Lock features an exclusive automatic locking system which is easy to engage.
- ▶ Heavy gauge fully extruded handles on both sashes.
- ▶ Fiberglass mesh half screens standard on all windows.
- ▶ Optional locking screen provides an additional safety measure.\*
- ▶ Available in Replacement and New Construction applications.



Full 3¾" Depth Welded Mainframe with beveled colonial exterior features curves that are not only beautiful, but also allow for maximum weld surface resulting in strength and years of long lasting performance.

Optional foam-filled insulated extrusions add energy efficiency - Deluxe version only. (Insulation type may vary during the manufacturing process)



Standard Sash lock with tamper-proof cam ensures a much smoother turn, and increases the life cycle over traditional locks.

Optional Auto-Lock features an exclusive automatic locking system which is easy to engage.



The Bulb Gasket Seal improves thermal performance, lowers drafts, and provides better acoustic insulation.

Push Button Spring-Loaded Vent Latches allow both window sashes to remain partially open for ventilation.



The sill dam wall is mortised into the jamb adding strength and lowering the possibility of leaks.

OKNA Windows offers three exterior color selections in addition to the standard Euro-White option to give your home a distinct look and enhance its Curb appeal. You can also special order custom exterior colors from a virtually unlimited selection of paints. Our paints are environmentally safe and durable, giving your exterior a vibrant and long-lasting color finish.

## Interior Options



Standard Euro-White finish and Standard Euro-White Lock



Optional Almond frame and Optional Almond lock

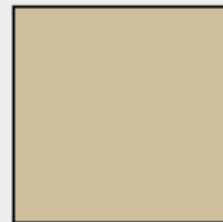


Optional Cocoa frame and Optional Cocoa lock

## Exterior Colors



Euro-White



Almond



Cocoa



Bronze



All colors except Euro-White are available at an additional charge.

## Optional Auto-Locks

All colors except Euro-White are available at an additional charge.

Colors on your monitor may not match the product's actual color. Please visit a local dealer to view actual color samples.



Euro-White

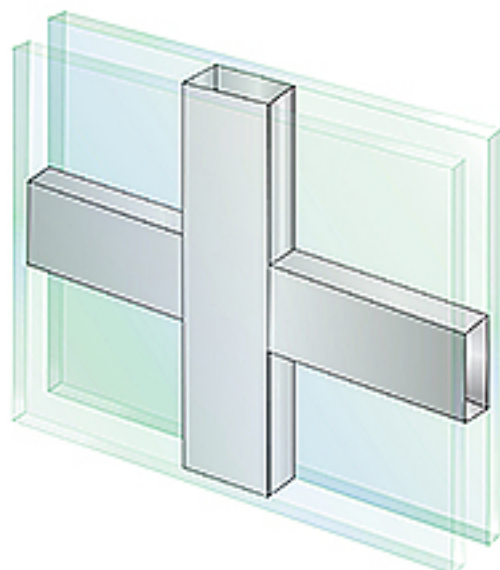


Almond

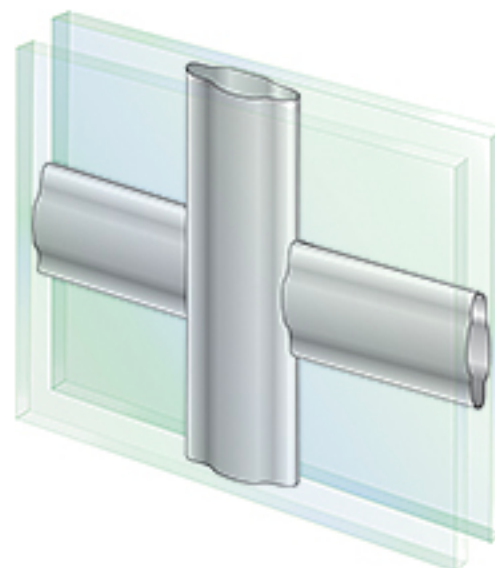


Cocoa





5/8" Flat Grid  
between glass

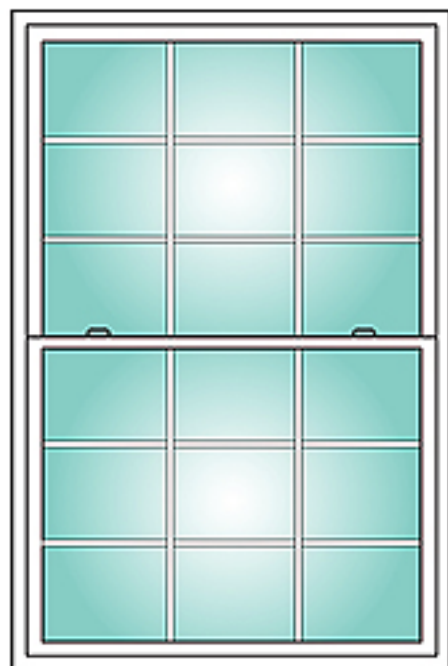


11/16" Contour Grid  
between glass

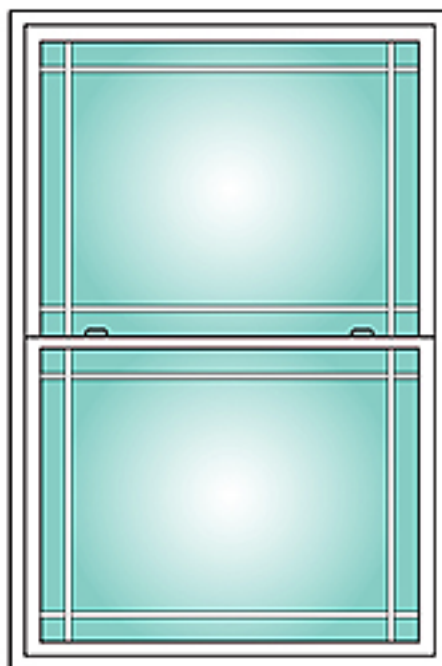
Are you looking for a stunning design detail to instantly set your home apart both inside and out? A choice of decorative grids for your OKNA Windows & Doors can highlight the architectural style that speaks to you.

Grids between glass (GBG) consist of aluminum bars sealed in the insulating airspace between the two panes of glass. Because the interior and exterior glass surfaces are not affected, cleaning your windows is a much easier task. GBG grids on two tone windows are available with matching interior and exterior colors.

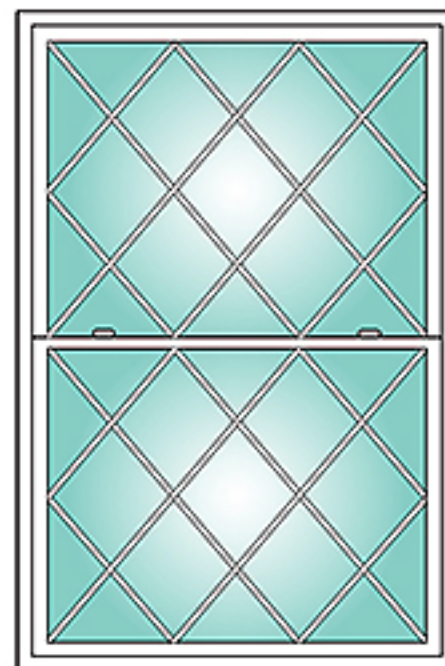
#### Most Common Grid Patterns



Colonial



Prairie



Diamond



OKNA Windows offers factory-installed half screen with heavy-duty handle. Screens are removable from the inside for convenient storage. Optional locking screen provides an additional safety measure.\*

(\* Insect screen cannot support significant amounts of weight. Please keep small children and pets away from windows when only insect screens are in use.)

OKNA Windows offers ThruVision® Screen standard on the 500 Series to improve the view through the window while protecting the interior from insects and allowing proper ventilation.



**ThruVision® Screen**

**Regular Screen**

(standard on all OKNA Windows)

Glazing Option	U-Value	SHGC	VT	CR	Energy Star Minimum*	Comparison To Energy Star Minimum	
<b>Dual Glazed</b>							
Clear Glass	0.46	0.61	0.63	45	0.30	<b>Does not qualify</b>	
With ESP	0.28	0.30	0.55	62	0.30	7%	Better
<b>Deluxe</b>	0.25	0.30	0.55	62	0.30	17%	Better
Triple Glazed							
With ESP	0.21	0.26	0.43	70	0.30	30%	Better
Deluxe	0.19	0.26	0.43	72	0.30	37%	Better
Deluxe/krypton Gas	0.15	0.26	0.43	76	0.30	50%	Better

U-Value, SHGC, VT, CR values may slightly change for windows made with GBG (Grids Between Glass)

SHGC - Solar Heat Gain Coefficient

VT - Visible Transmittance

CR - Condensation Resistance

ESP - Energy Saving Package

CIT - Currently In Test

\* Northern Climate Zone

	OKNA Windows	Industry Minimum	Comparison To Industry Minimum
AAMA Rating	R	50	R 15
Air Infiltration cam/ft2		0.02	0.3 1500% Better
Water Penetration mph		54	33 64% Better
Structural Integrity mph		171	94 82% Better

Water Penetration mph - Specifies wind load pressure in mph a window can withstand without leaking, under rain equivalent to 8" per hour.

Structural Integrity mph - Wind load in mph a window can withstand before breaking.

All result numbers are based on tested window sample by NFRC & AAMA testing window guidelines. Use for comparison purposes only. Actual values may vary depending on installation, size of the window, and other conditions.